

Flow Weigher DC4-A660/S0 (0°)

Continuous flow scale

Kontinuierliche Durchlaufwaage

Connections/Prozessanschlüsse

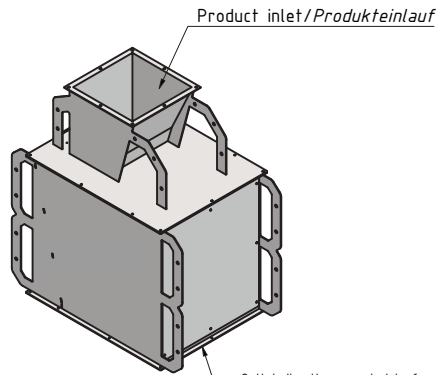
Inlet/Einlauf: 0°/400x400mm (rectangular/rechteckig)
 (Optional: transition to DN300-400/Übergang auf DN300-400)

Outlet/Outlet: 660x660mm frame/Rahmen
 (Optional: transition to DN400/Übergang auf DN400)

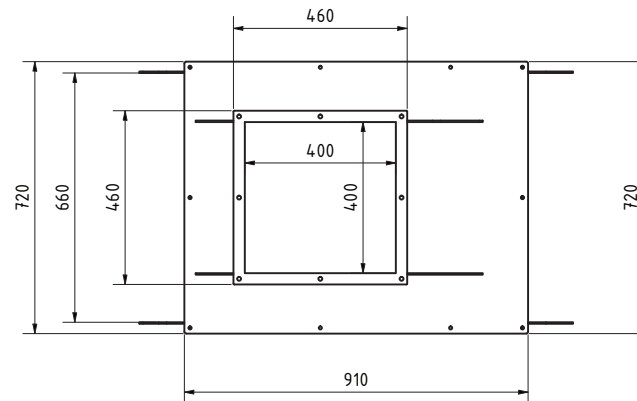
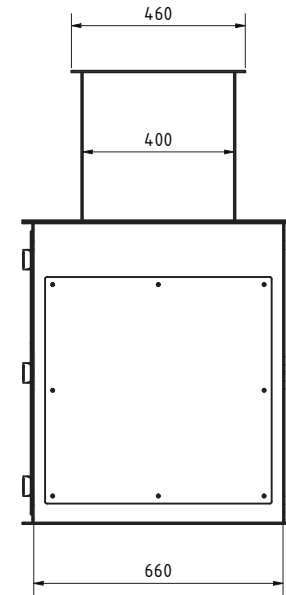
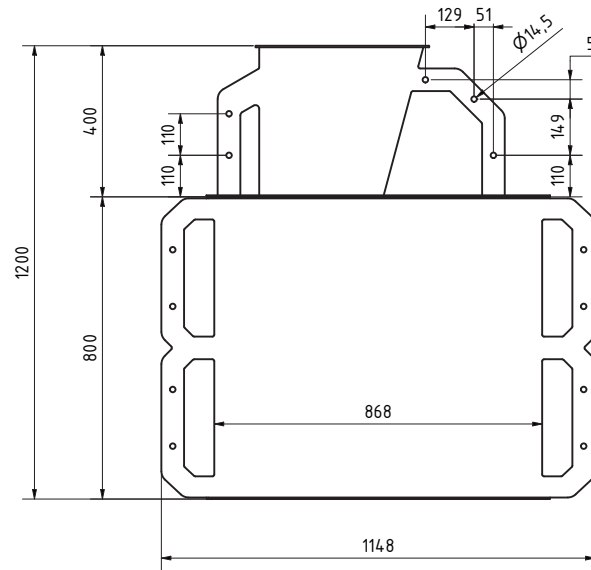
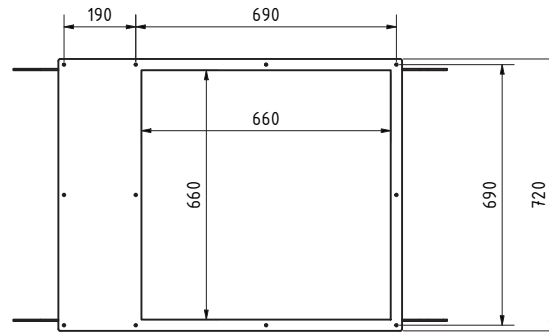
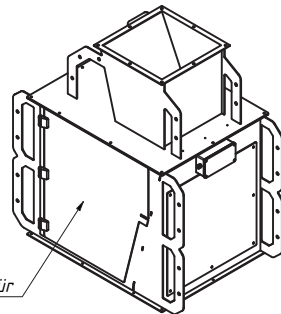
Available evaluation electronics/Verfügbare Auswertelektroniken:

Option Type/Typ FE128:
 Extern evaluation electronic /Externe Auswerteeinheit

Option Type/Typ FE730:
 Internal evaluation electronic /Interne Auswerteeinheit



Outlet directly connected to frame flange
 or with transition to DN-pipe.
*Auslauf direkt an Rahmen-Flansch
 oder mit Übergangsstück auf Rohr-DN.*



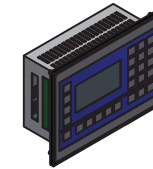
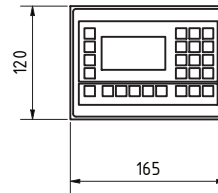
Extern evaluation electronic type FE128
/Externe Auswerteeinheit Typ FE128

Incl. control unit with display/keypad
Inkl. Bedieneinheit mit Display/Tastatur

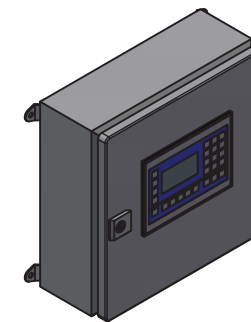
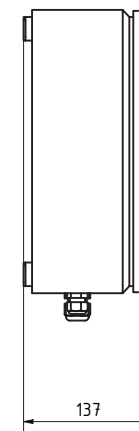
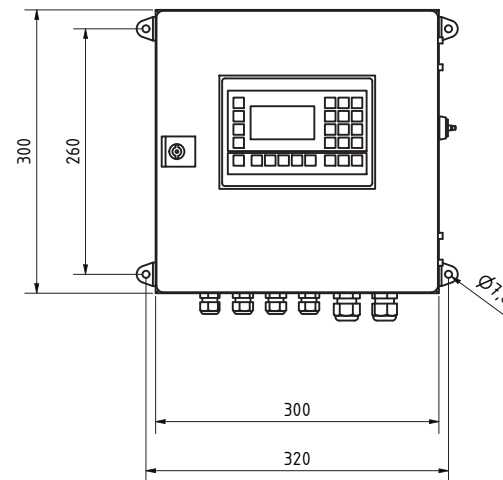
Supply voltage: 230V AC or 24V DC / 1A
Versorgung: 230V AC oder 24V DC/1A

Optional interfaces:
Profibus, Profinet, Ethernet/IP, Modbus rtu/TCP
*Optionale Schnittstellen:
Profibus, Profinet, Ethernet/IP, Modbus rtu/TCP*

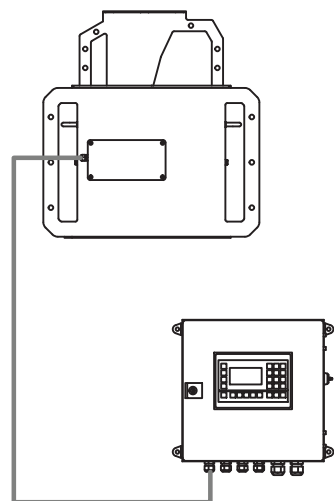
Panel mounting / *Schalttafeleinbau*



In wall housing / *Im Wandgehäuse*



Connection weighing unit - evaluation electronic
Verbindung Wiegeeinheit - Auswerteelektronik

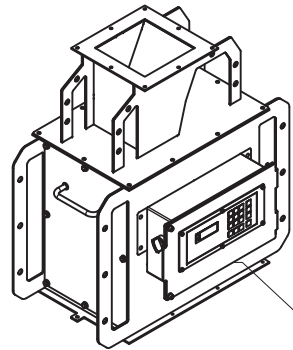


Integrated evaluation electronic type FE730
Integrierte Auswerteeinheit Typ FE730

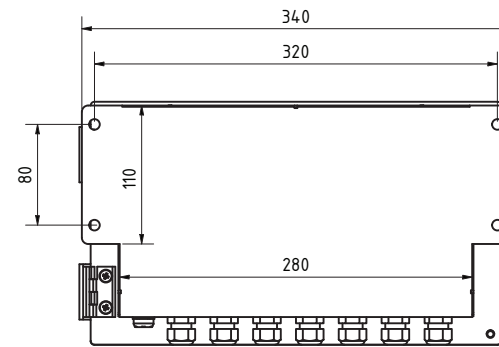
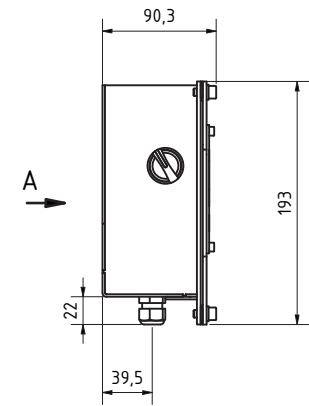
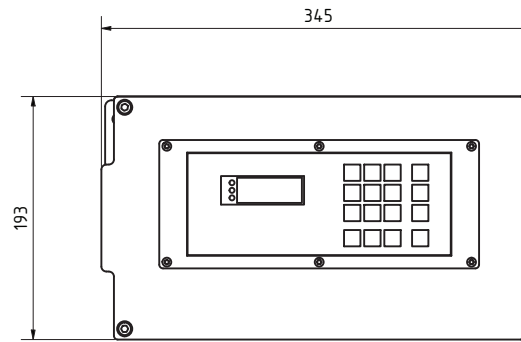
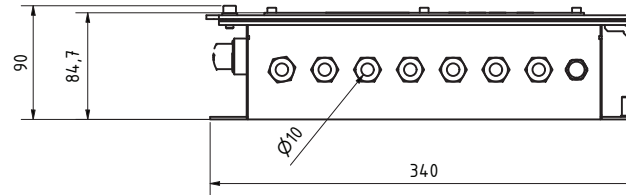
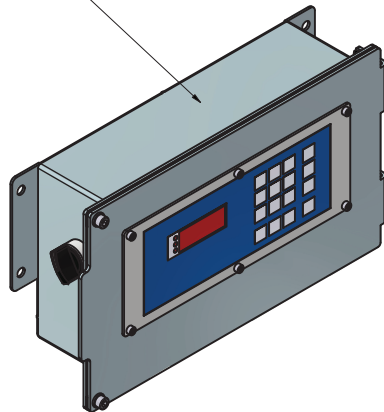
Incl. control unit with display/keypad
Inkl. Bedieneinheit mit Display/Tastatur

Supply voltage: 230V AC or 24V DC / 1A
Versorgung: 230V AC oder 24V DC/1A

Optionally: Profibus, Profinet, Ethernet/IP, Modbus rtu/TCP
Optional: Profibus, Profinet, Ethernet/IP, Modbus rtu/TCP



Directly mounted to weighing unit
Direkter Anbau an Wiegeeinheit



A (1 : 3)