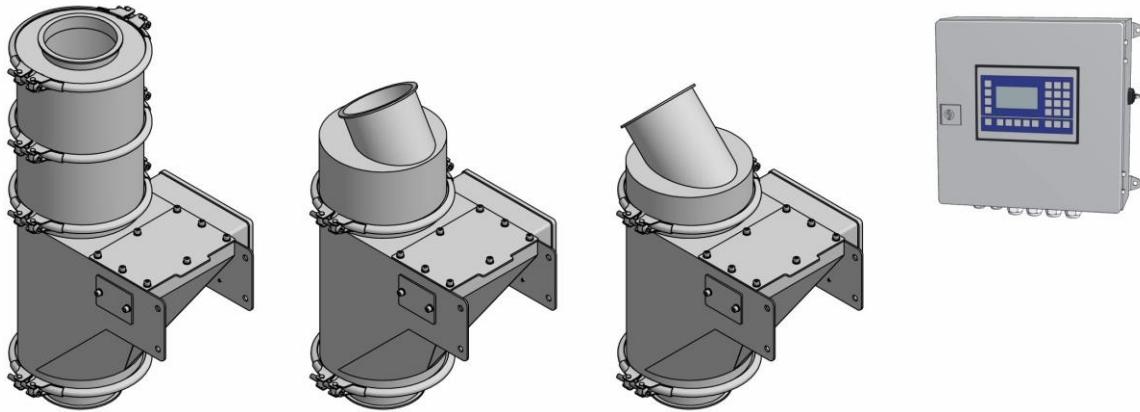


FLOW WEIGHER DC3

Compact flow measurement for free flowing bulk solids



Overview

- Accurate flow weighing system with low installation height
- Also available as vertical version with centric alignment of inlet/outlet
- Reliable and robust system with low maintenance
- Designed for weighing of grain, malt, pellets and granules
- Widely independent from bulk density

Applications

The *Flow Weigher DC3* is suited for the following applications:

- Continuous weighing of bulk flow for in-plant control purpose
- Pre-weighing of bulk for truck loading processes
- Entry of quantities for silo management

The *Flow Weigher DC3* continuously weighs free bulk flow.

Function

The bulk is slowed down and fed into a pipe bend. The pipe bend is connected with a load cell. The measured force is proportional to the throughput.

Applied products

All free flowing products can be measured, e.g. grain, pulses, granules, malt, pellets, soya, diverse bruised grains and bran (special design).



Construction

The *Flow Weigher DC3* consists of steel housing, sensing pipe, load cell and electrical measuring system. The housing is dust-tight.

Sizes

The following sizes are available:

Type	Pipe Ø at inlet	Max. capacity approx.	Model type
DC3.120	120 mm	20 m ³ /h	Each size is available as 0°, 30° and 45° version (inlet inclination).
DC3.150	150 mm	35 m ³ /h	
DC3.200	200 mm	75 m ³ /h	
DC3.250	250 mm	133 m ³ /h	
DC3.300	300 mm	175 m ³ /h	
DC3.350	350 mm	225 m ³ /h	

The housing is made of standard steel, powder-coated in color RAL7032, inlet and outlet pipe ends are round and align centrally. On demand available in stainless steel.

Mechanical integration

The weigher must be installed in vertical position. Inlet and outlet are supplied with flared tube end. In case of vibrations the inlet or outlet must be uncoupled by rubber sleeves. Air flowing through the weigher due to pressure differences must be prevented.

Accuracy

The measuring tolerance lies at +/- 0,5 – 2 %*, depending on feed design, product homogeneity and throughput.

Evaluation electronic type FE128

- Available for panel mounting (24 V DC) or inside wall housing (230 V AC)
- Can be installed independent from the weighing unit
- With LCD-display and keypad
- Display of capacity and total weight
- Preselection function, after expiry of a desired amount, an output is switched
- Output of kg-pulses
- Analogue output of capacity (0-10 V), 4-20mA optionally
- Graphic registration over 48h
- 10 product-specific calibrations possible
- RS232/485-interface, Profibus optionally

Due to our policy of continuous development, given specifications and data are subject to change.

*(*Related to working range of 20-100% of maximum capacity. Variations may occur caused by wrong feed pipe design, product inhomogeneity and extern disturbing sources.)*

FRIEDRICH electronic GmbH & Co. KG

Germany

Tel. +49 6406 1509

www.friedrich-electronic.de

COMPACT BULK SOLUTIONS